

Anchorage 2335 (66")
Open House 2334 (54")

Multi-Purpose
 Upholstery
 Panel
 Acoustic



White*
2664



Birch
2129



Vanilla
2130



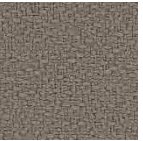
Angora
2035



Straw
2034



Asteroid
2053



Goose
2049



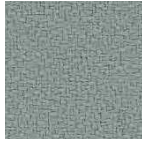
Fossil
2093



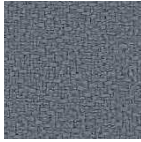
Graphite
2079



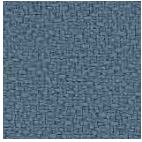
Onyx
2016



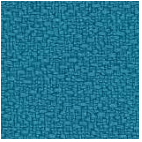
Slate
2017



Wolf
2027



Quarry Blue
2026



Waterfall
2691



Lapis
2094



Sea
2077



Deep Water
2051



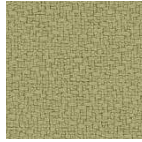
Thistle
2085



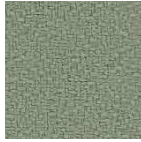
Cobalt
2045



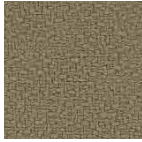
Midnight
2025



Green Olive
2048



Eucalyptus
2047



Cumin
2050



Green Apple
2087



Willow
2028



Pine Needle
2022



Henna
2052



Coffee Bean
2083



Sunshine
2082



Goldenrod
2090



Amber
2020



Pumpkin
2021



Poppy
2091



Magenta
2692



Geranium
2084



Red Delicious
2014



Mulberry
2044



Aubergine
2036

*Not recommended for use as Upholstery.

Anchorage 2335 (66") Open House 2334 (54")

Multi-Purpose
Upholstery
Panel
Acoustic

Specifications

Content

35% post-consumer recycled polyester
65% pre-consumer recycled polyester

Weight

2334 - 13.1 ± 1.0 oz./lin. yd.
2335 - 15.0 ± 1.0 oz./lin. yd.

Width

2334 - 54" min. useable
2335 - 66" min. useable

Repeat

none

Backing

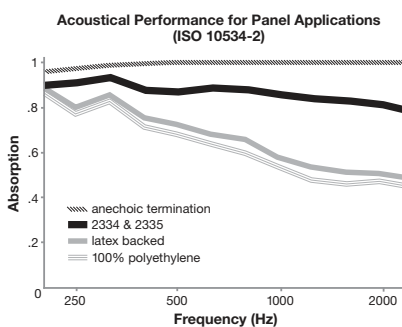
none

Treatment

none

Acoustical Performance

The plot below summarizes impedance tube measurements of absorption of an anechoic termination and various fabrics in front of the anechoic termination.



NRC of anechoic termination

1.00

NRC of fabric in front of anechoic termination

.85

Guilford of Maine

guilfordofmaine.com

800 544 0200 Customer Care
616 554 2255 Fax

02/17

Cleaning Code

Standard Care Label W-S. Clean with water based cleaning agents, foam or pure, water free solvents. Vacuuming or light brushing is recommended to prevent dust and soil buildup.

Performance

Colorfastness to Light (AATCC 16 Option 3)
Grade 4 min. at 40 hours

Colorfastness to Crocking (AATCC 8)
Grade 4 min. dry & Grade 3 min. wet

Breaking Strength (ASTM D5034)
275 lbf min. warp and fill

Seam Slippage (ASTM D4034)
50 lbf min. warp and fill

Pilling Resistance (ASTM D3511)
Class 4 min.

Flammability
CA Technical Bulletin 117-2013 Section 1
NFPA 260/UFAC Fabric Classification - Class I
ASTM E84 Class 1 or A

Abrasion (ASTM D4157)
250,000 double rubs min. cotton duck

Sustainability

100% recycled and recyclable
Terratec is a registered trademark of Duvaltex

Miscellaneous

This product carries a 10 year performance warranty when used as upholstery and a 5 year limited warranty when used on vertical surfaces.

Please specify when ordering whether 54" or 66" width is needed. Dye lots may vary. Differences may also occur between corresponding colors of Anchorage 2335 and Open House 2334.

Every effort has been made to ensure color accuracy of the digital images, however, please order a sample before specification. Application testing of this product is recommended. This is a directional fabric.

Visit guilfordofmaine.com for samples.

This pattern is included in the underwriters laboratory panel fabric recognition program. Additional testing of this U.L. recognized component fabric is not required on approved panels from participating manufacturers.

*Multiple factors affect fabric durability and appearance retention, including end-user application and proper maintenance. Wyzenbeek results above 100,000 double rubs have not been shown to be an indicator of increased lifespan.

Certification Marks owned by the Association for Contract Textiles, Inc.