

FR701® 2100

Panel
Acoustic



Eggshell
144



Wheat
130



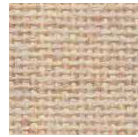
Bone
748



Buff
460



Straw
747



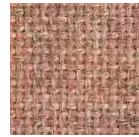
Vanilla Neutral
403



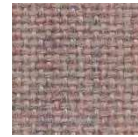
Terra
751



Cherry Neutral
400



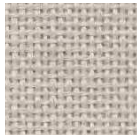
Cinnabar
422



Rose Quartz
390



Quartz
380



Pearl
481



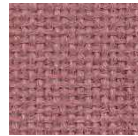
Desert Sand
758



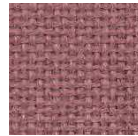
Apricot Neutral
404



Pumice
423



Bronze
545



Sienna
475



Red
799



Claret Accent
418



Deep Burgundy
556



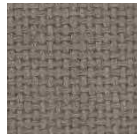
Sunshine
797



Light Moss
754



Earth
792



Moleskin
796



Chocolate
793



Lavender Neutral
405



Lilac
752



Violet
753



Amethyst
424



Iris
798



Dune
749



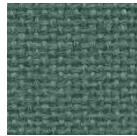
Leaf
755



Stream
757



Aquamarine
381



Blue Spruce
467



Eucalyptus
468



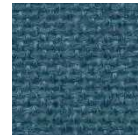
Green Neutral
402



Lake
756



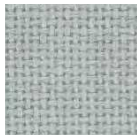
Chrome Green
549



Ultramarine
470



Verte Papier
561



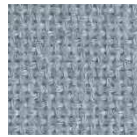
Coin
794



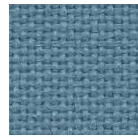
Blue Papier
539



Blue Neutral
401



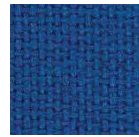
Crystal Blue
175



Bayberry
486



Wedgewood
150



Cobalt
420



Baltic
153



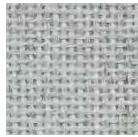
Blue Plum
553



White
224



Opal
394



Silver Papier
538



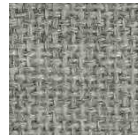
Silver Neutral
406



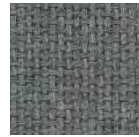
Cement Mix
750



Steel Grey
471



Grey Mix
238



Flannel
795



Medium Grey
298



Black
408

FR701® 2100

Panel
Acoustic

Specifications

Content

100% post-consumer recycled polyester

Weight

16.0 ± 0.5 oz./lin. yd.

Width

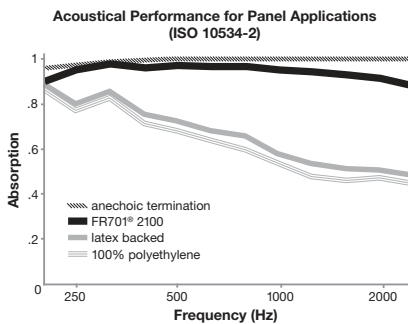
66" min. useable

Repeat

none

Acoustical Performance

The plot below summarizes impedance tube measurements of absorption of an anechoic termination and various fabrics in front of the anechoic termination.



NRC of anechoic termination

1.00

NRC of fabric in front of anechoic termination


.95


Cleaning Code


Standard Care Label W-S. Clean with water based cleaning agents, foam or pure, water free solvents. Vacuuming or light brushing is recommended to prevent dust and soil buildup.

Performance

 **Colorfastness to Light (AATCC 16 Option 3)**
Grade 4 min. at 40 hours

 **Colorfastness to Crocking (AATCC 8)**
Grade 4 min. dry & Grade 3 min. wet

 **Breaking Strength (ASTM D5034)**
150 lbf min. warp and fill

 *** Flammability (ASTM E84)**
Class I or A

Sustainability

 **100% recycled and recyclable**
Terratex is a registered trademark of Duvaltex

 **facts[®]**
Silver

Miscellaneous

5 year limited warranty. Proudly woven in North America supporting our local communities.

Every effort has been made to ensure color accuracy of the digital images, however, please order a sample before specification. Application testing of this product is recommended. Colors may vary between dye lots. This is a non-directional fabric.

Visit guilfordofmaine.com for samples.

 This pattern is included in the underwriters laboratory panel fabric recognition program. Additional testing of this U.L. recognized component fabric is not required on approved panels from participating manufacturers.

*Certification Marks owned by the Association for Contract Textiles, Inc.

Guilford of Maine

guilfordofmaine.com

800 544 0200 Customer Care
616 554 2255 Fax

02/17